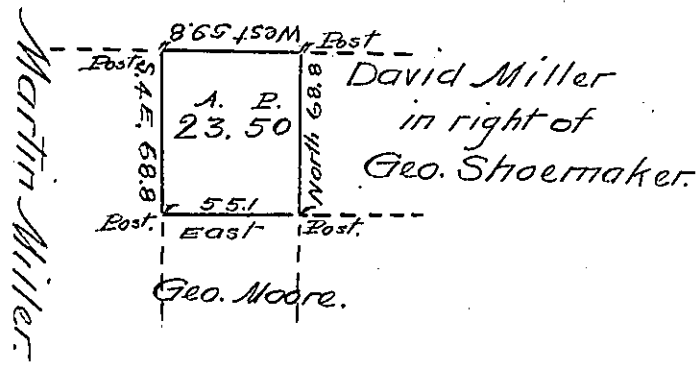


Musser & Shakespear



A draught of twenty three acres & fifty perches  
 & the allowance of six & cent for roads & is situate -  
 in Haines Township Centre County, being part -  
 of a larger tract which was surveyed for Thomas  
 Afflick August 18<sup>th</sup> 1773 in pursuance of an or-  
 der of survey bearing date at Philada<sup>a</sup> the 1<sup>st</sup>  
 day of Aug. 1766 No 297; divided for David Mil-  
 ler Oct<sup>r</sup> 17<sup>th</sup> 1801 agreeably to division lines run  
 by Fred<sup>k</sup> Evans late Dep<sup>t</sup> Surv<sup>r</sup> Oct<sup>r</sup> 1792

Samuel Cochran Esq<sup>r</sup> } James Harris D.S.  
 Surv<sup>r</sup> Gen<sup>l</sup> of Penna<sup>a</sup> }

IN TESTIMONY that the above is a copy of the original remaining on file in  
 the Department of Internal Affairs of Pennsylvania, made  
 conformably to an Act of Assembly approved the 16th day of  
 February, 1833, I have hereunto set my Hand and caused  
 the Seal of said Department to be affixed at Harrisburg,  
 this fourteenth day of December 1905.

*Lucie B. Brown*  
 Secretary of Internal Affairs.